

Econ Soil Panel

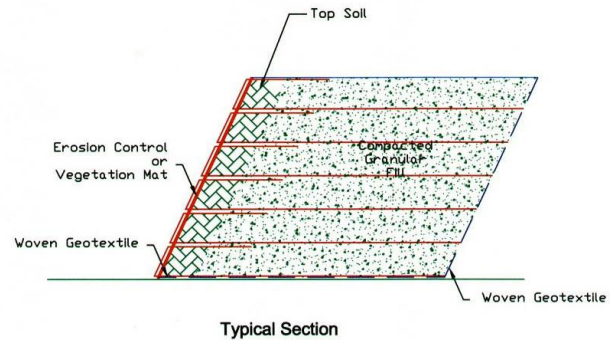
Description

The Econ Soil Panel reinforced soil system is a budget variation on our original patented Soil Panel™ reinforced soil system. It is effectively a modification of our Soil Panel™ with the front mesh removed. It loses out on some of the structural and aesthetic benefits of the Soil Panel™ but compensates by being cheaper. It is a more durable, practical and realistic alternative to geogrid wraparound which does not require shuttering of the front face, thus making it quicker and easier to install.

It was developed as an alternative to the Soil Panel™ to cater for projects where the final appearance of the finished vegetated wall may not be as critical and cost is paramount.

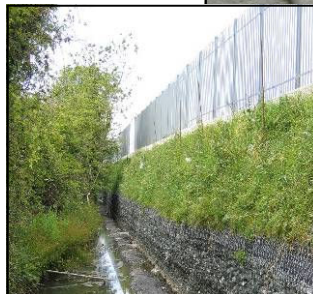
The Econ Soil Panel consists of a choice of erosion control or vegetation mats sandwiched between a layer of Alu-Zinc coated welded mesh panel on the inside and PVC coated rock netting on the outside. The Rock netting completely wraps around the whole panel and extends into the backfill to from the soil reinforcement as well. The Alu-Zinc coating of the welded mesh and The PVC coating on the galvanised rock netting ensures that our system will still be there for a long time.

The panel is backfilled with top soil just behind the face, and compacted frictional fill in the structural zone. Vegetation can be introduced by planting, seeds added into the top soil, preseeded vegetation mats or hydroseeding.



Advantages

- Choice of erosion control or vegetation mats for the front face
- Vegetated and natural looking slope
- No special foundation required
- Minimises muck away
- Factory assembled for fast installation
- Wraparound of mesh provides continuity of reinforcement
- Steel mesh is more robust and less prone to construction damage
- No need to shutter front face
- Quicker and cheaper to install than geogrid wraparound



Uses

- Highway embankments.
- Boundary slopes
- River banks above the water level
- Residential developments.
- Sports and recreation grounds.
- Theme parks.



Options

Inside Mesh

Mesh size: 75mm x 75mm
Wire size: 3mm or 4mm or 5mm
Coating: Plain or Alu-Zinc

Outside Mesh

Mesh size: 60 x 80mm or 80 x 100mm
Wire size: 2.0/3.0mm or 2.7/3.7mm
Coating: Heavy Galv. or PVC

Erosion Control/Vegetation Mat

- φ Coirmat
- φ Preseeded Covamat
- φ Plastic Secumat

